

## Colors and Materials Board

**Campagnet-Connor  
Residence**  
6867 Jefferson St.  
Yountville, CA

### 1) Siding:

Paint SW 7000 "Ibis White"

### 2) Trims:

Including Porch columns and rails Paint SW 7000 "Ibis White"

SW 7000  
**Ibis White**  
Interior / Exterior  
Location Number: 260-C2

1  
2

### 3) WINDOWS/DOORS:

Clad Wood "Black" –  
Manufacturer TBD

**4) FRONT DOOR:** Paint  
SW 6989 "Domino"

### 5) ROOF:

Standing Seam Metal–  
Metal Sales "Matte  
Black"

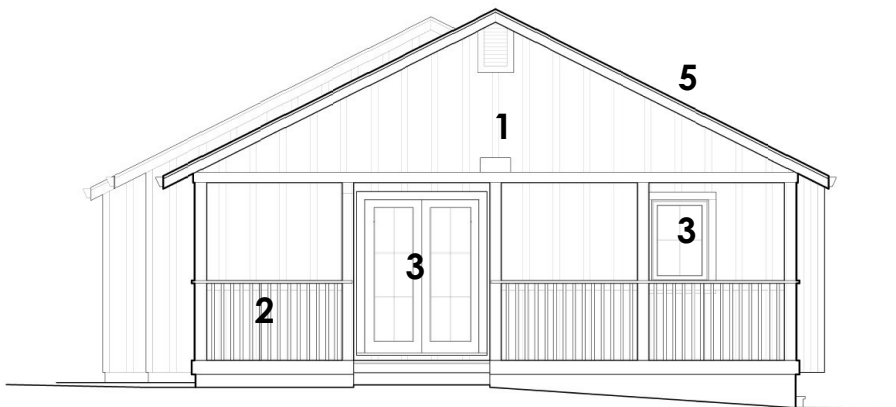
3

SW 6989  
**Domino**  
Interior / Exterior  
Location Number: 252-C5

4

5

**Matte Black (106)**



**Note – Color and material scheme to match at proposed ADU**

Dec 4, 2023