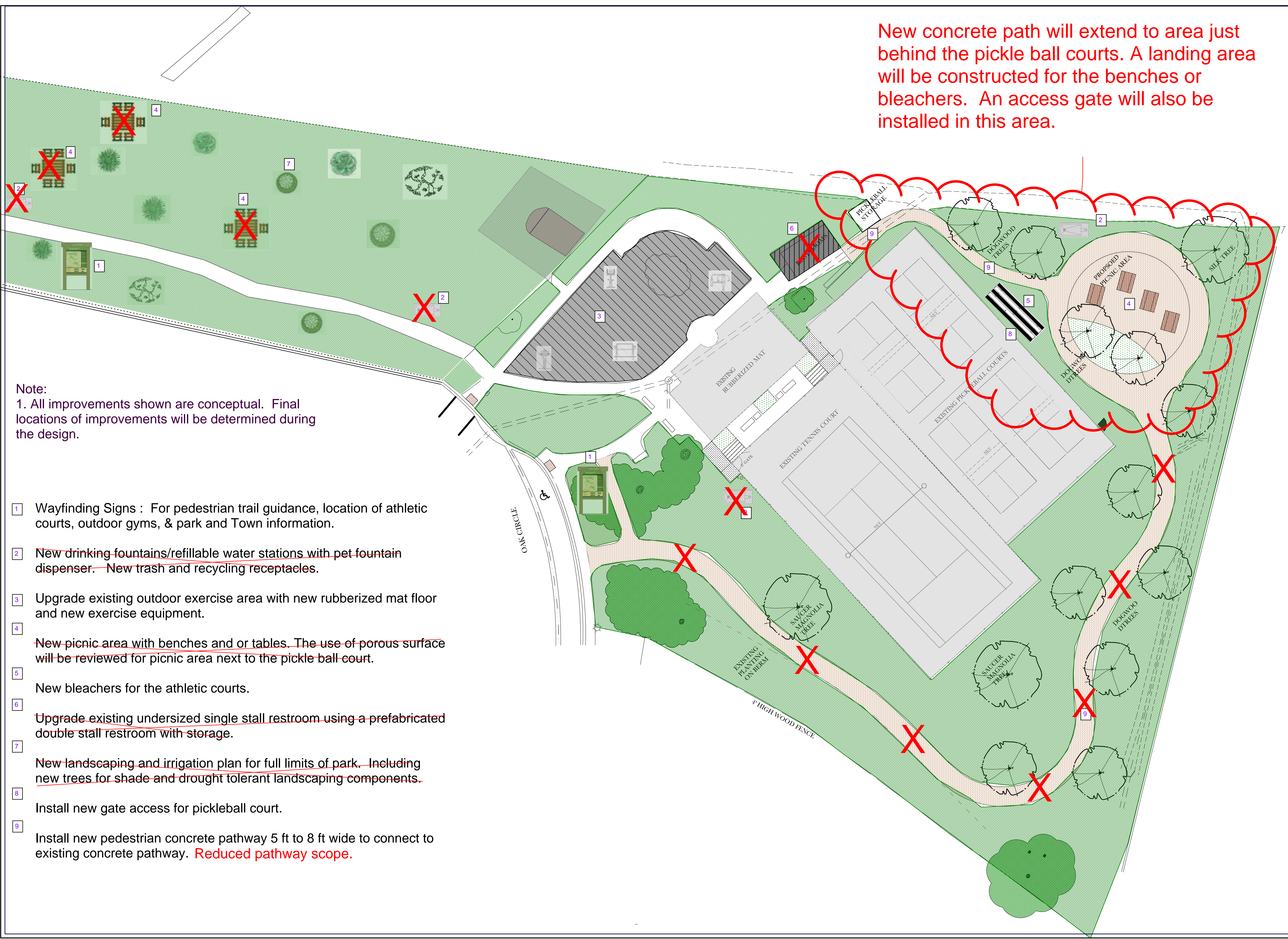


New concrete path will extend to area just behind the pickle ball courts. A landing area will be constructed for the benches or bleachers. An access gate will also be installed in this area.



Note:

1. All improvements shown are conceptual. Final locations of improvements will be determined during the design.

- 1 Wayfinding Signs : For pedestrian trail guidance, location of athletic courts, outdoor gyms, & park and Town information.
- 2 ~~New drinking fountains/refillable water stations with pet fountain dispenser.~~ New trash and recycling receptacles.
- 3 Upgrade existing outdoor exercise area with new rubberized mat floor and new exercise equipment.
- 4 ~~New picnic area with benches and or tables. The use of porous surface will be reviewed for picnic area next to the pickle ball court.~~
- 5 New bleachers for the athletic courts.
- 6 ~~Upgrade existing undersized single stall restroom using a prefabricated double stall restroom with storage.~~
- 7 ~~New landscaping and irrigation plan for full limits of park. Including new trees for shade and drought tolerant landscaping components.~~
- 8 Install new gate access for pickleball court.
- 9 Install new pedestrian concrete pathway 5 ft to 8 ft wide to connect to existing concrete pathway. **Reduced pathway scope.**